

# Brilliant Bees



We hope that you enjoy using the activities in this challenge as much as we enjoyed designing it.

All you have to do to gain the badge is complete five activities. The activities within this pack are ideas rather than definitive so feel free to expand on them. The most important bit is that you have fun!

**Stourbridge Trefoil Guild**

**Raising funds for the Blackmore Worcestershire County Campsite  
and Friends of the WAGGGS World Centres (FOWWC)**

## Brilliant Bees

Bee populations worldwide are rapidly declining due to loss of habitat, insecticides and disease. Changes in agricultural practice mean that there is no longer the variety of plants for bees to feed from. This is not just through the use of weed killers, but also through the destruction of hedgerows and mowing of roadside verges.

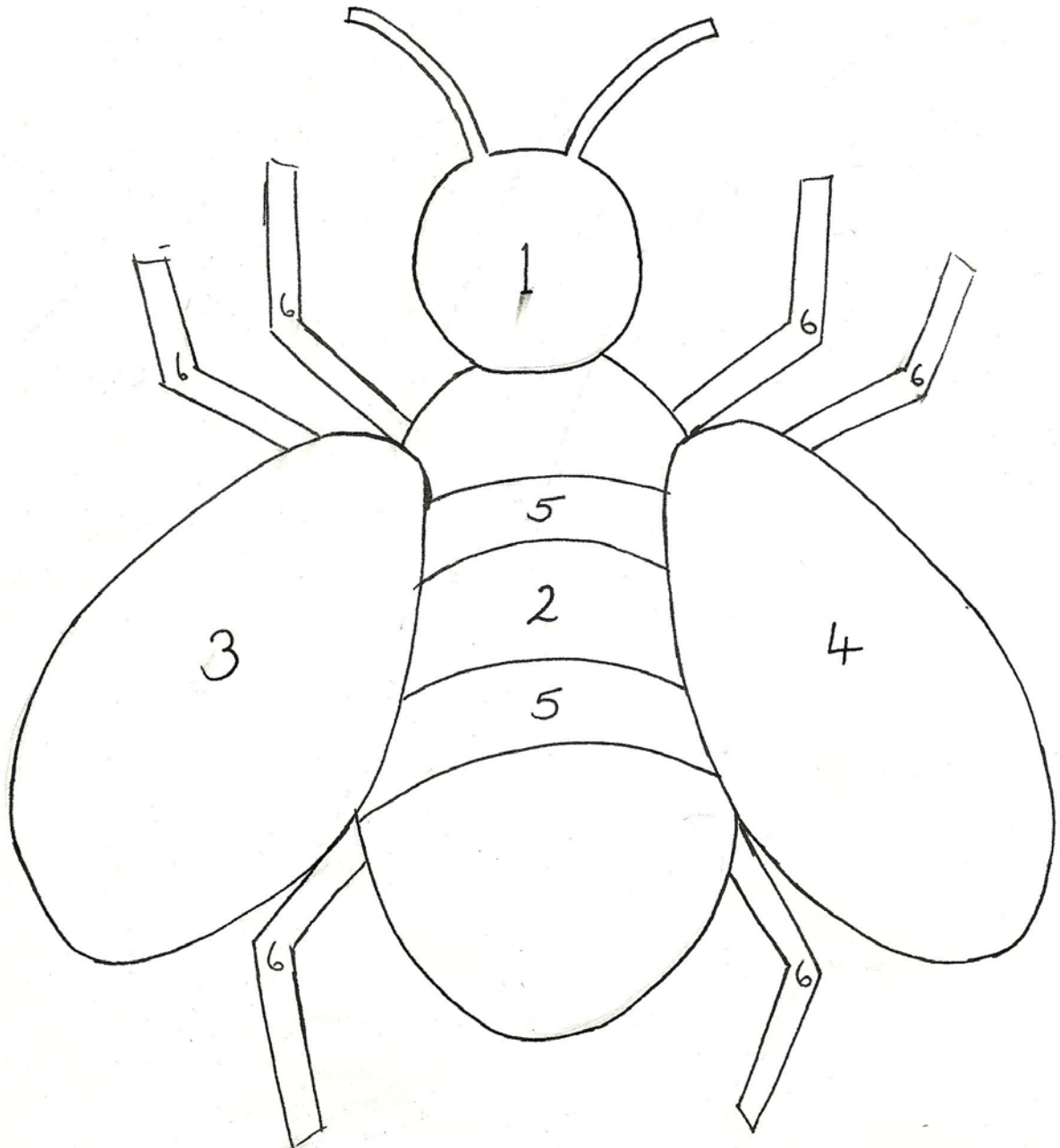
### Bee facts

- 🐝 There are currently 24 species of bee in the UK. There are 20 000 species worldwide.
- 🐝 Bees eat nectar and pollen. This makes them important pollinators, allowing plants to reproduce. If a plant is not pollinated, it will not produce seed and will die out.
- 🐝 40% of the food we eat depends on plants being pollinated by insects, including bees.
- 🐝 Albert Einstein allegedly said that without bees to pollinate our crops, we would die out within 4 years.
- 🐝 Bees live in colonies of up to 70 000 bees with one queen.
- 🐝 Without a queen, a bee colony will not survive. Only the queen bee lays eggs.
- 🐝 Worker bees feed larvae nectar and pollen. To create a queen, the larva is fed royal jelly.
- 🐝 Bees store nectar for food as honey. After they have collected it, they regurgitate it into honeycombs!
- 🐝 Some people keep honey bees and harvest their honey and wax. This is called beekeeping or apiculture. A beekeeper is called an apiarist.
- 🐝 Bee hives dating back to 900 BC were discovered in Israel. The Ancient Egyptians, Greeks and Romans all kept bees.
- 🐝 Royal jelly? There are bee hives at Buckingham palace and also on the roof of Fortnum and Mason.
- 🐝 Honey has been used medicinally since the Ancient Greeks and Romans. It has antibacterial properties and is still used today as a wound dressing and for soothing sore throats. It is also used in beauty products.

## Games & Fillers

### Beetle drive

Use the template to make a beetle drive for each six/patrol. Cut each bee up, so that each individual part has a number and place in a central pile.



#### How to play:

Taking turns, each player throws the die. When a player throws a 'one', they may claim a head from the central pile. They continue to throw the die until a 'two' is rolled. The winner is the first six/patrol to complete their bee. The bee must be assembled in numerical order.

## Queen Bee

Pick one girl to be the queen bee. The queen bee picks an object (like i-spy) and says;

“Bumble bee, bumble bee,  
I see something you don’t see,  
And the colour of it is... (*insert colour of object*)”

The other girls then guess which object she has picked.

## Word search

H	O	N	E	Y	C	R	E	P	Y
Q	I	A	F	I	B	D	M	O	L
U	M	V	G	A	U	T	S	L	L
E	B	I	E	R	Z	A	I	L	E
E	E	B	U	P	Z	O	Y	E	J
N	E	C	T	A	R	C	H	N	L
B	S	A	L	X	K	E	W	T	A
E	W	J	O	A	P	I	A	R	Y
E	A	L	I	U	Q	Z	S	E	O
B	X	T	Z	F	L	O	W	E	R

Apiary  
Beeswax  
Buzz  
Flower  
Hive  
Honey  
Nectar  
Pollen  
Queen Bee  
Royal Jelly

## Quiz

Make up a quiz using the bee facts on the first page.

## Poet’s Corner

Challenge girls to make up a poem or song about bees.

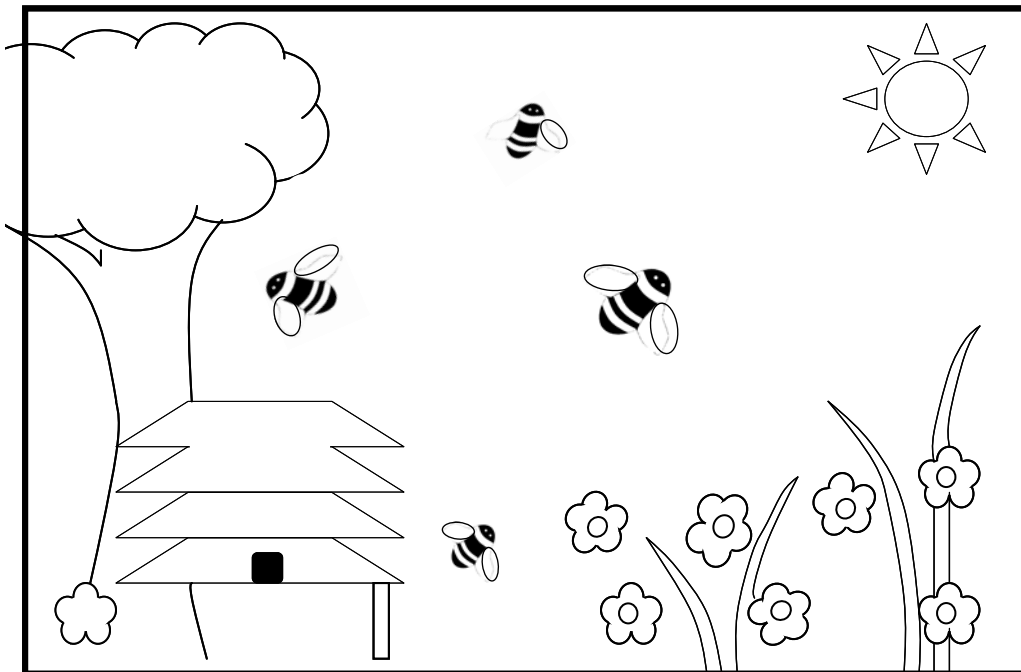
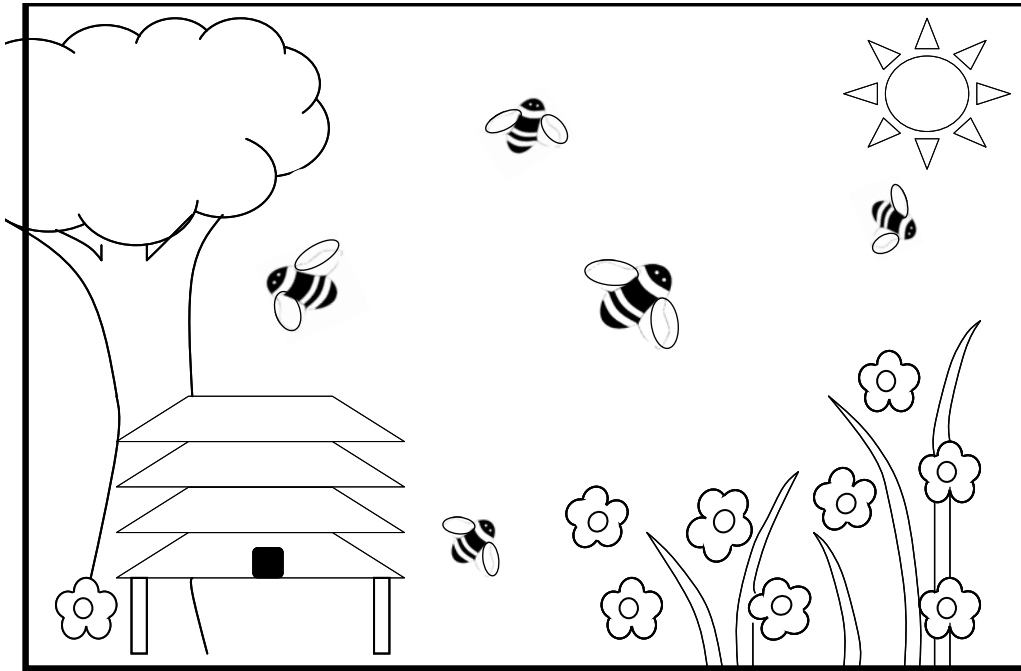
## Waggle Dance

What is a waggle dance, and why do bees do it? Could girls make up their own dance?

Poems and dances could be performed at a bumblebee ball.

Spot the difference

There are 10 differences between the pictures. Can you find them all?



## Craft

### Beeswax candles

Beeswax is made from honeycomb and has been used for centuries in a variety of products, including the mouthpieces of didgeridoos. Beeswax candles can be made by gently warming sheets of wax and rolling them around a wick.

### Sun catcher or Mobile

You will need:

Paper

Acetate

Outliner paste

Glass paints or glass painting pens

Ribbon / String

Sticks (for mobile)

Scissors

1. Draw a design onto the paper.
2. Place the acetate on top of the paper, and trace the design using the outliner paste.
3. Use the paints or pens to colour the design. When dry, cut out and make a small hole at the top.
4. Thread cotton or a ribbon through the hole so that the sun catcher can be hung in a window.
5. To make it into a mobile, create several designs and hang them with ribbon or string from some sticks.

### Bumble Bee Magnets

You will need:

Paper

Scissors

Laminates

Laminator

Pens / crayons

Glue

Magnet

1. Draw a bumble bee design onto the paper and decorate.
2. Cut out the bumble bee.
3. Laminate the design (using laminate sheet and laminator).
4. Stick the laminated bumble bee to the magnet.
5. Have fun placing that magnet on lots of surfaces like your fridge!

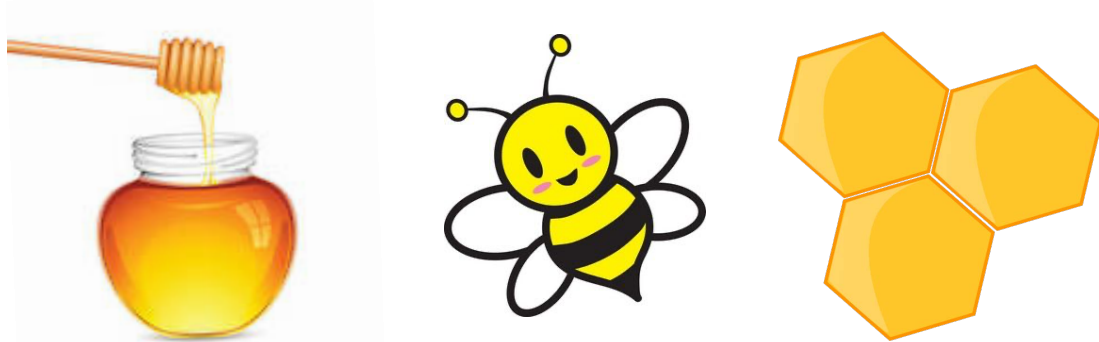
## Food and drink

### Honey glazed grilled fruit kebabs (serves 6)

#### Ingredients:

1 fresh pineapple  
3 bananas  
1 mango  
Runny honey  
Lemon juice  
Skewers

1. Chop the fruit into chunks and skewer to create a kebab. Place the kebabs in a large dish.
2. Mix 4tbs of honey with 2tbs lemon juice. Pour the glaze over the kebabs and leave to marinate for 30 minutes, turning once.
3. Cook the kebabs under a hot grill or on a barbeque for 5 minutes, turning frequently, until the fruit is hot.



### Apple and honey muffins (makes 12 large muffins)

#### Ingredients:

3 cups of self-raising flour  
3/4 cup of vegetable oil  
1 cup of sugar  
1 cup of yoghurt  
3 eggs  
1 cup of peeled and chopped apple 4 tbsp honey  
1/2tsp cinnamon

1. Preheat the oven to gas mark 7.
2. Mix the flour, sugar, oil, and yoghurt together. Beat the eggs and add to the mixture.
3. Add the apple, cinnamon and honey to the batter and stir.
4. Divide the batter between muffin cases and cook for 20 minutes or until golden.

NB. It doesn't matter what size cup is used as long as the same one is used for all ingredients (obviously a large cup will produce a larger volume of batter than a small cup).

### Banana, honey and yoghurt smoothie (serves 1)

#### Ingredients:

½ banana  
Natural yoghurt  
Orange juice  
Honey  
Lemon juice

Place half a banana, 100ml of yoghurt and 50ml of orange juice in a blender with 1tsp of honey and a splash of lemon juice and blend.

### Honey, lemon and ginger tea

Place a small amount of peeled and chopped root ginger (about 1tsp) in a mug with a couple of slices of lemon and 1tsp of honey. Pour over boiling water and stir. Leave for a couple of minutes to infuse before drinking.

### Bee Friendly

#### Make your own beehive

#### You will need:

A 1 litre tetrapak drinks carton (rinsed)  
Paper straws  
Newspaper  
Cotton wool  
Scissors  
String

1. Cut away the bottom of the carton.
2. Cut 15 paper straws in half and tie together top and bottom in a bundle.
3. Wrap some squares of newspaper around the bundle of straws, with some cotton wool. This will keep the bees warm.
4. Put the bundle in the carton and fill any spaces with spare stuffing.
5. Tie a piece of string to the top of the carton, and hang it in a sunny position near a flowerbed about 1m above the ground.

How do bees build a hive (either in the wild or within a frame)?

#### Bee friendly gardening

Girls could grow a bee-friendly plant from seed or plant a bee friendly flowerbed at your meeting place. Many bee friendly plants will attract other insects such as butterflies.

Mint, thyme, rosemary, sage, sunflowers, lavender, lupins and hollyhocks are some bee friendly plants which can be grown from seed. Why not have a competition to see who can grow the tallest sunflower? Alternatively, visit someone who keeps bees or an insect friendly garden.



## Useful websites

- 🐝 Operation Bumblebee <http://www.operationbumblebee.co.uk/>
- 🐝 Bumblebee Conservation Trust: [www.bumblebeeconservation.org.uk](http://www.bumblebeeconservation.org.uk)
- 🐝 The Bumblebee Pages: [www.bumblebee.org](http://www.bumblebee.org)
- 🐝 Honey Association: <http://www.honeyassociation.com/index.htm>

## Branding Approval

Email confirmation from: [BrandingMatters@girlguiding.org.uk](mailto:BrandingMatters@girlguiding.org.uk)

---

**From:** [Branding Matters](#)

**Sent:** 22 March 2021 09:30

**To:** [Heather Cruickshanks](#)

**Subject:** RE: HAGLEY DIVISION Brilliant Bees Blackmore 4 Emb[15117].pdf

Hello Heather,

No need to apologise we are living in crazy times right now. I can confirm the attached Brilliant Bees badges does meet our branding guidelines.

Regards

Sarah Goodstadt



## Badge Order Form

Thank you for completing the Brilliant Bees badge.

The badge is as illustrated on the first page of the pack (colours may change slightly) and 8cm diameter.

Please make cheques payable to Stourbridge Trefoil Guild.

	Quantity	Cost
Number of badges required @ £1.25 each		
Postage and packing	1 - 20 badges - £1.50 21 - 50 badges £2.50	
	<b>Total</b>	

Contact Name: \_\_\_\_\_

Unit: \_\_\_\_\_

Address: \_\_\_\_\_

\_\_\_\_\_

\_\_\_\_\_

\_\_\_\_\_

Telephone number: \_\_\_\_\_

Email address: \_\_\_\_\_

Comments: \_\_\_\_\_

\_\_\_\_\_

Completed order forms and cheques to: Stourbridge Trefoil Guild

4 Whitmore Road  
Wollaston  
Stourbridge  
West Midlands  
DY8 3RE  
United Kingdom

Badges will be delivered as soon as possible.

Profits will be donated to the Blackmore Worcestershire County Campsite and Friends of the WAGGGS World Centres (FOWWC).

Please contact us by email for any international orders as postage costs and availability varies:

[brilliantbeeschallenge@gmail.com](mailto:brilliantbeeschallenge@gmail.com)